



Beyond Automation: Empowering the Workforce in the AI Era

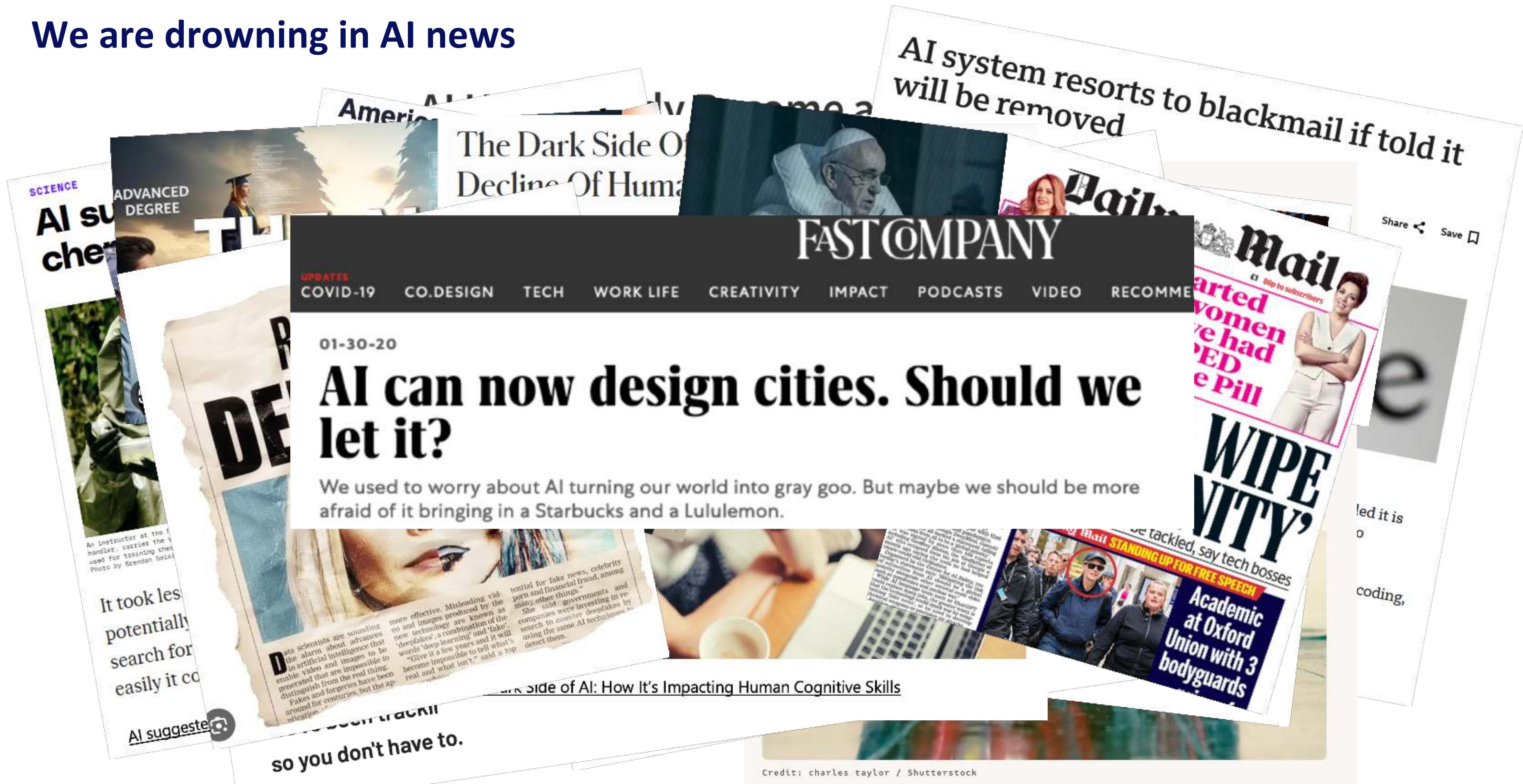


we love digital.



we live digital.

We are drowning in AI news



Tremendous Potentials!

Home > International Journal of Artificial Intelligence in Education > Article

Positive Artificial Intelligence in Education (P-AIED): A Roadmap

ARTICLE | Published: 03 August 2023
Volume 34, pages 732–792, (2024) [Cite this article](#)

Detecting early signs of more than 1,000 diseases

Microsoft's AI Is Better Than Doctors at Diagnosing Disease

Story by Alice Park • 6d • 5 min read



AI can spot more bone fractures than humans can

Surprisingly, urgent care doctors miss broken bones in up to 10% of cases. What's more, X-ray technicians are both in short supply and overloaded.

So using [AI to do the initial scan](#) could potentially avoid both unnecessary X-rays and missed fractures. The UK's National Institute for Health and Care Excellence (NICE) says the technology is safe, reliable and could reduce the need for follow-up appointments.

BUSINESS INSIDER

DOW JONES ▼ -0.24% NASDAQ ▼ -0.2% S&P 500 ▼ -0.12% AAPL ▼ +0.14% NVDA ▼ +0.58% MSFT ▼ -0.21% AMZN ▼ -0.71%

HOW AI IS CHANGING EVERYTHING

Utilities are tiptoeing into AI as climate change center growth add stress to the energy grid

By Aaron Mok

Article • Tech & AI

Can AI Save 5Gt of CO₂ Emissions in the Climate Transition?

By Chlee Williment
June 26, 2025 • 5 mins

AI could help cut up to 5.4 Giga tonnes of CO₂e annually by 2035 research says, with examples from Amazon, Google, Oracle and more driving climate action

An offshore oil platform is engulfed in a massive fire, with thick black smoke billowing into the sky. The platform's yellow structure is visible through the flames. The background shows a dark sea under a twilight sky.

And the inconvenient truth is ...

**Standing still in a world
reshaped by AI is not an option,
only radical adaptation ensures survival!**

**Efficiency is being redefined at every level –
powered by AI!**

40%

**Predictions signal
boost in productivity**

(McKinsey, 2023)

78%

**Global companies currently
use AI**

(McKinsey, 2025)

92%

**Companies plan to increase
their investment in AI**

(Exploding Topics, 2025)

A hand holding a pair of glasses, symbolizing vision or insight. The background is a solid dark blue color.

AI is disrupting our world as profoundly as the Industrial Revolution - only faster!

We as humans are no longer the most efficient automation tool

So, what should we do then?

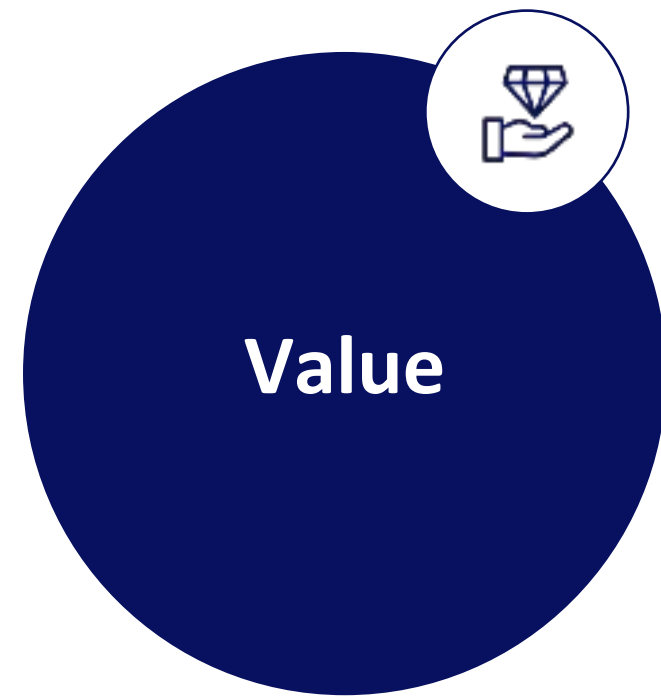
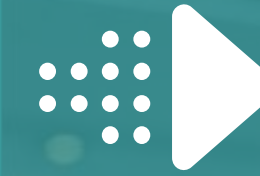


How to approach it?



A transformation program designed to
unleash technological maturity,
organizational agility, and human growth!

Hybrid Intelligence!



Developing **technologies, infrastructure, and platforms** around concrete **use cases** **enables** early and continuous **value creation** with tangible results.



Adaptive organization fosters human-machine collaboration, **enhances resilience**, and **accelerates innovation cycles**.



Cultivating mindset, intuition, and willingness to learn enables **responsible leadership**, creative collaboration, and **confident use of AI**.

Technological maturity

+ Organizational adaptability

+ Human growth

**AI readiness requires a change in
mindset, skills & organizational design**

**Embrace AI as your teammate,
not your enemy**



A background image showing a business meeting with three people. A woman in a dark blazer is smiling and looking towards the right. Another woman is partially visible on the left, and a man is in the foreground holding a tablet. Overlaid on the image are various digital graphics: a world map, bar charts, line graphs, and data tables, all in a light blue and white color scheme.

Start small!

1.

A clear snapshot of your leader-ship's position & growth potential

2.

Powerful insights into leadership qualities to drive transformation

3.

Relevant AI use cases with early feasibility checks

4.

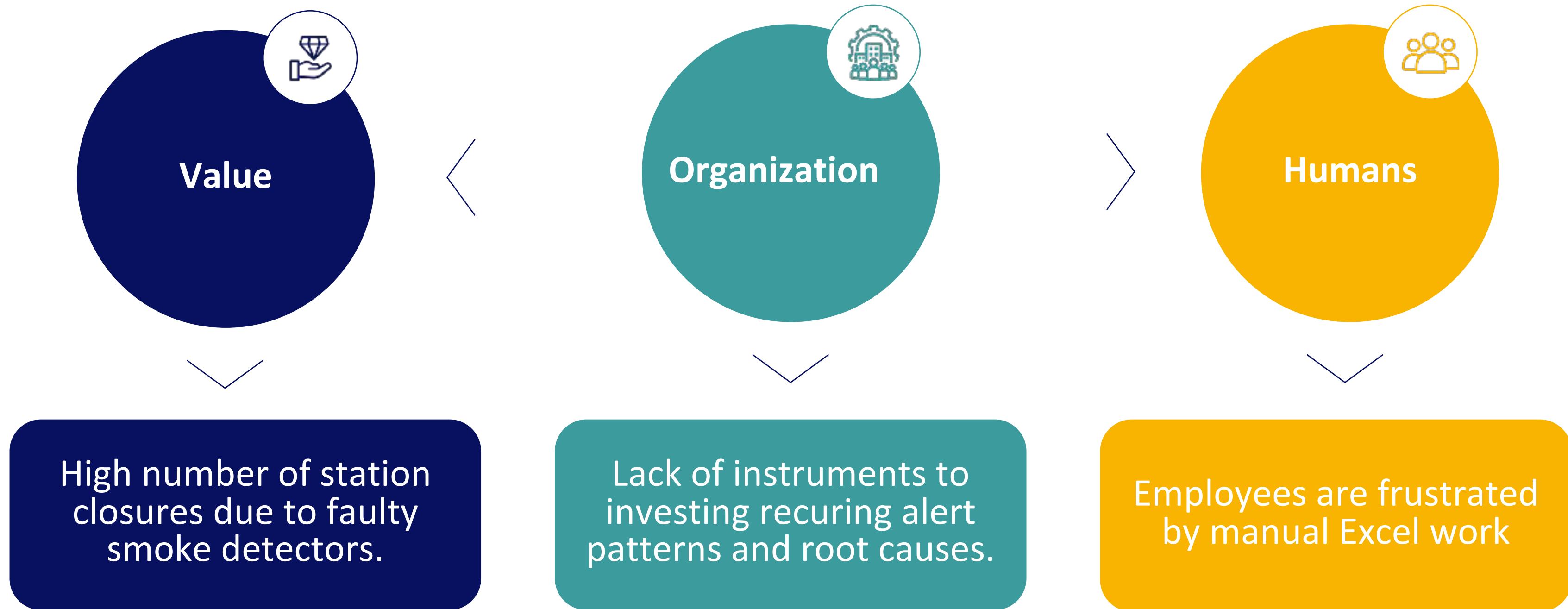
A practical roadmap to bring Hybrid Intelligence to life

A hand is shown interacting with a digital globe composed of a network of white nodes and connecting lines. The background is a deep blue with faint, glowing circular patterns and a bright light source behind the globe, creating a lens flare effect. The overall theme is technology and global communication.

Application of AI Fire alert detection – City of Munich

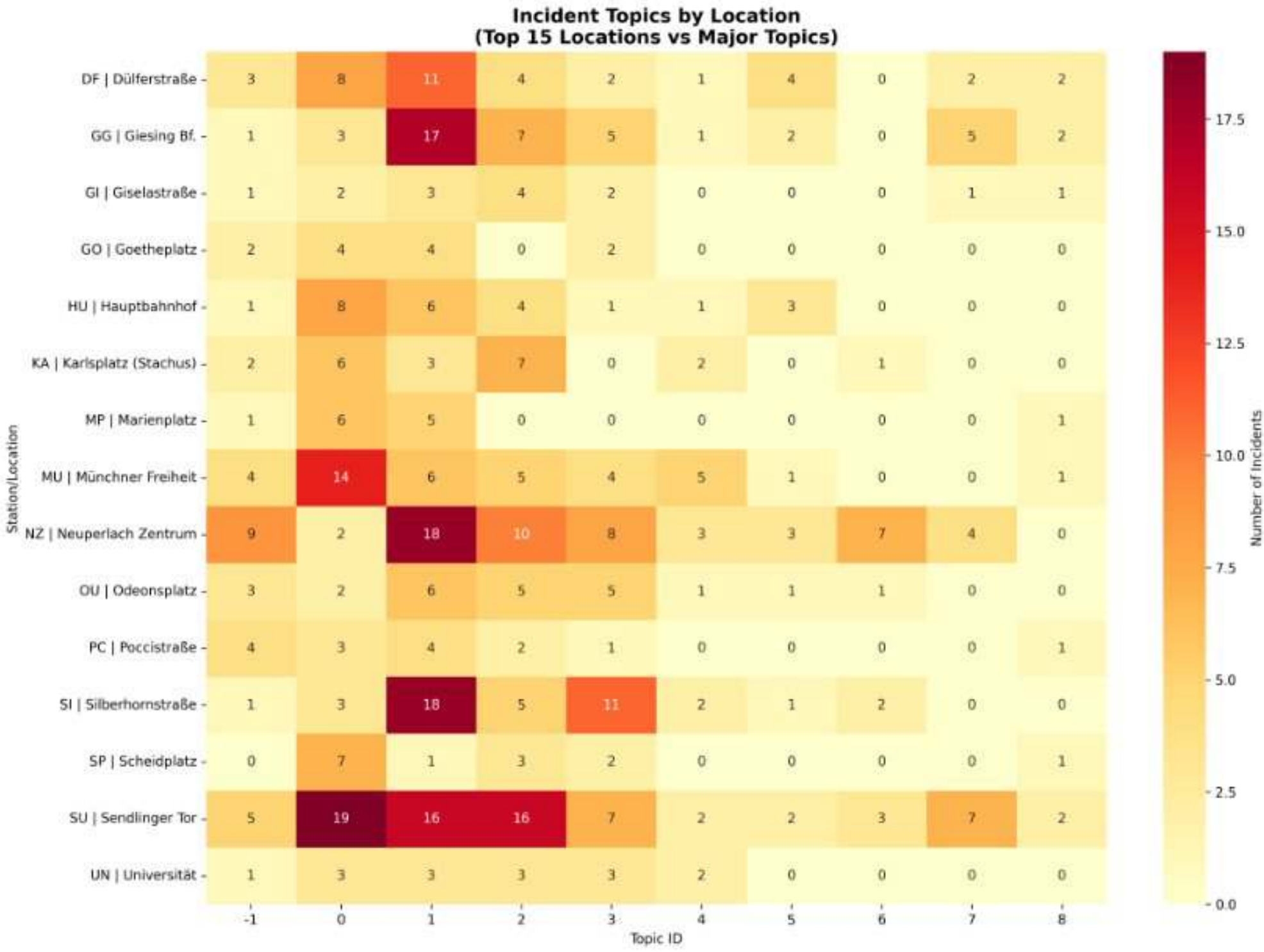
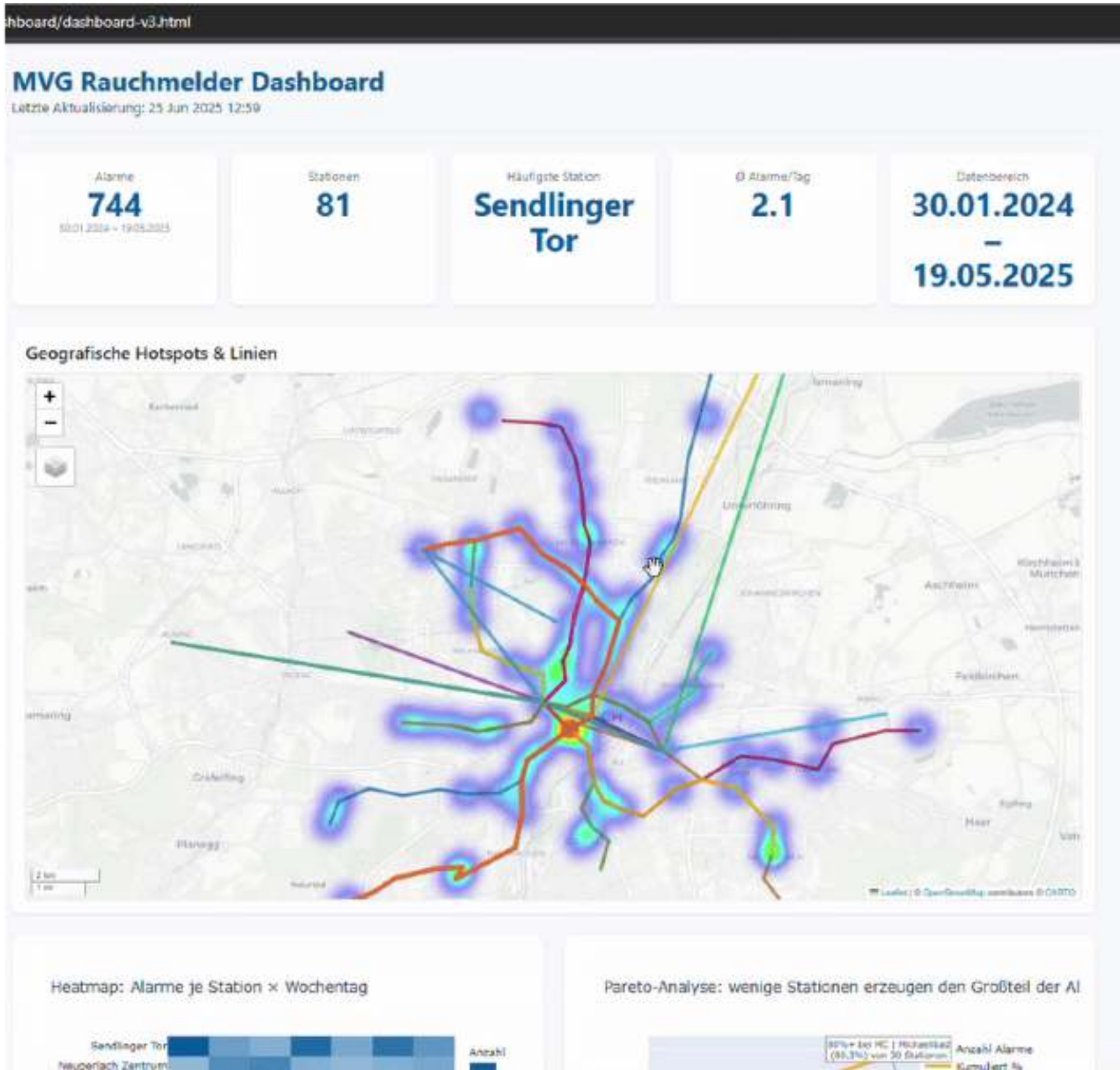
Core Challenges: Falsely detected Fire alerts

Example: Natural language processing to analyze false alarms

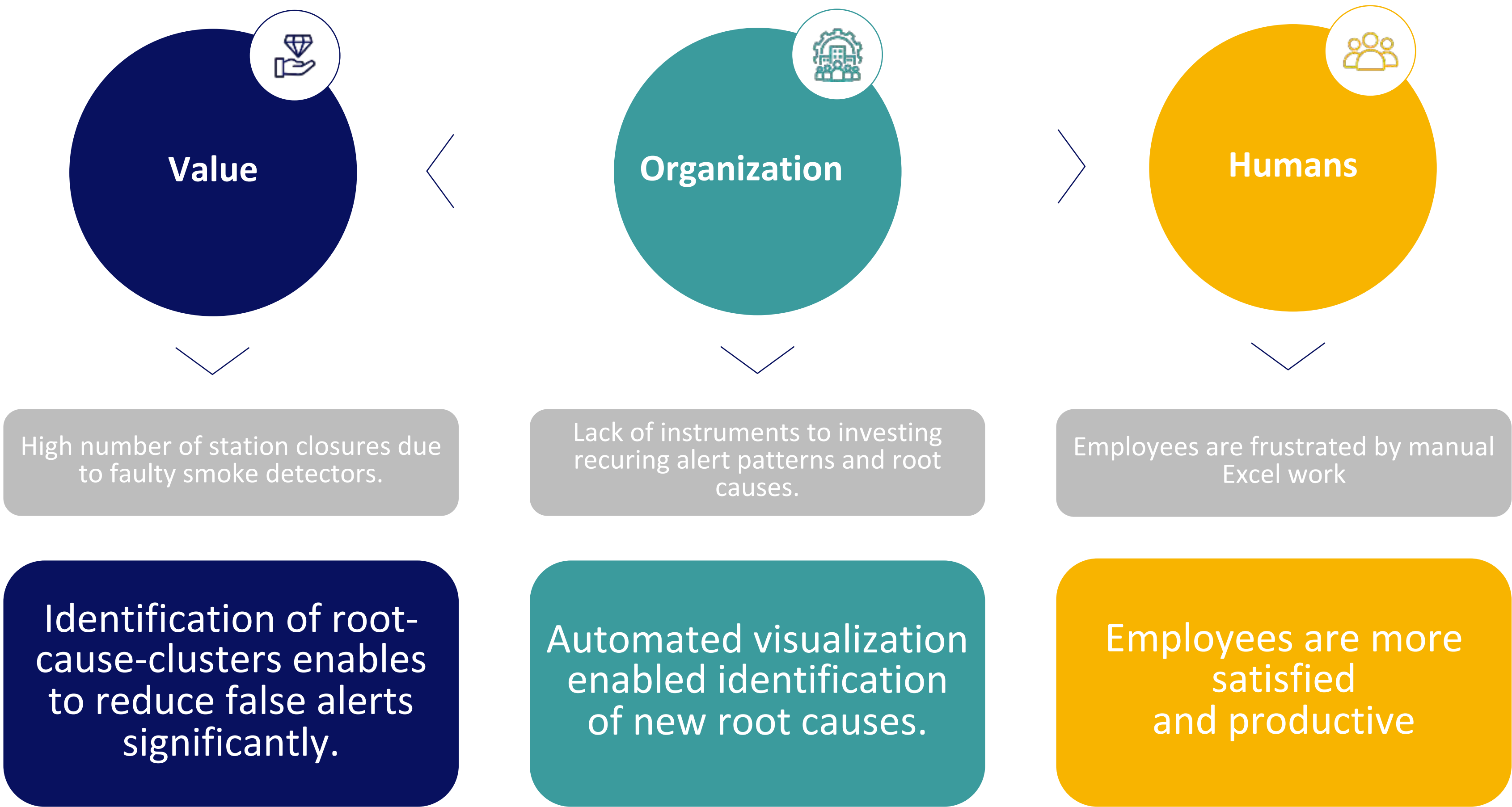


Dashboarding and Results:

Current data and interactive evaluation of topic clusters



Challenges & Results



Contact & Questions



Dominik Graetz

Co-Founder DigitalNewX

dominik.graetz@digitalnewx.com

+49 1523 8363 259

**Time for questions
& discussions!**

